



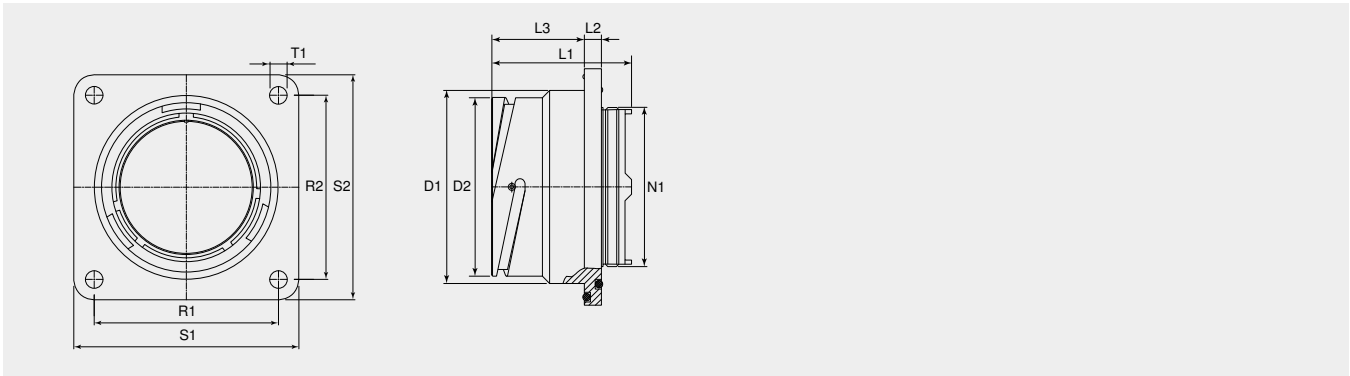
## Series GU

Special design, bayonet coupling with five guiding keys, waved ring spring and elastic insert for crimp-contacts. Rolling studs at the bayonet ring as well as bayonet engagement with steel slab. Available in size 48 only. These receptacles correspond to the standards MIL-DTL-5015 and VG95234. They can be used for both indoor and outdoor applications. They are available in size 48 only and can be used for indoor as well as outdoor applications

Depending on the backshell used watertightness of up to IP69K can be achieved for the connection. The receptacles have been tested for outdoor use according to IEC EN 60529 IP65 / IP67 / IP68 (5bar) and according to DIN 40050 and IP69K.

For outdoor applications in addition a back shell with sealed cable clamp or with an adapter for heat shrinkable shapes is required.

The main properties of these railway-fit receptacles are, in brief: Bayonet coupling | Only inserts with layout 48-58 and 48-4 available | Resistant against fuels, greas- and insulating oils etc. | High mechanical loading capacity



Item number	Size	Number of contacts	D1 (Ø)	N1	L1 (mm)	EMI
GU310-48-4PN-TAC	48	4	90.0	M74x1.5	98.0	
GU310-48-58PN-EAC	48	58	90.0	M74x1.5	65.0	No