



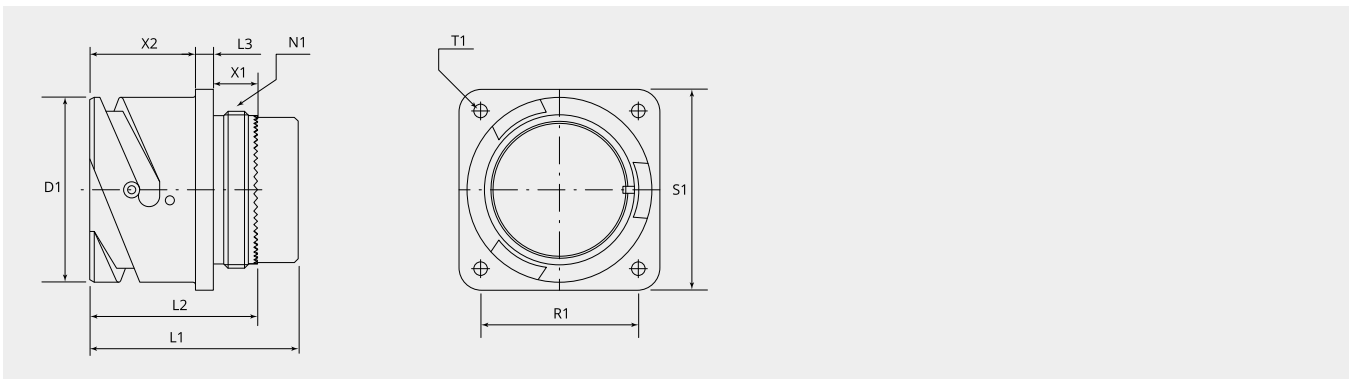
## GV210

Front panel mount receptacle, with accessory-thread and through fixing holes. Five guiding keys, with an extended Insert for better insulation at increased voltage. These receptacles correspond to the standards MIL-DTL-5015 and VG95234 for increased voltage. They can be used for both indoor and outdoor applications. They have an extended elastic insert for better insulation. These receptacles are only available in size 24 and 40.

Depending on the backshell used watertightness of up to IP69K can be achieved for the connection. The connectors have been tested for outdoor use according to IEC EN 60529 IP65 / IP67 / IP68 (5bar) and according to DIN 40050 and IP69K.

For outdoor applications a back shell with sealed cable clamp or with an adapter for heat shrinkable shapes is required.

The main properties of these railway-fit receptacles are, in brief: Bayonet coupling | Only inserts with layout 24-A4, 40-A3 and 40-A16 available | Resistant against fuels, greas- and insulating oils etc. | High mechanical loading capacity



| Item number        | Size | Number of contacts | D1 (Ø) | N1                | L1 (mm) | EMI |
|--------------------|------|--------------------|--------|-------------------|---------|-----|
| GV210-24-A4PN-EAC  | 24   | 4                  | 41.0   | 1 3/8"-18 UNEF 2A | 50.0    | No  |
| GV210-24-A4SN-EAC  | 24   | 4                  | 41.0   | 1 3/8"-18 UNEF 2A | 50.0    | No  |
| GV210-40-A3SN-EAC  | 40   | 3                  | 66.0   | 2 5/16"-16 UN 2A  | 60.0    | No  |
| GV210-40-A16PN-EAC | 40   | 16                 | 66.0   | 2 5/16"-16 UN 2A  | 50.0    | No  |