

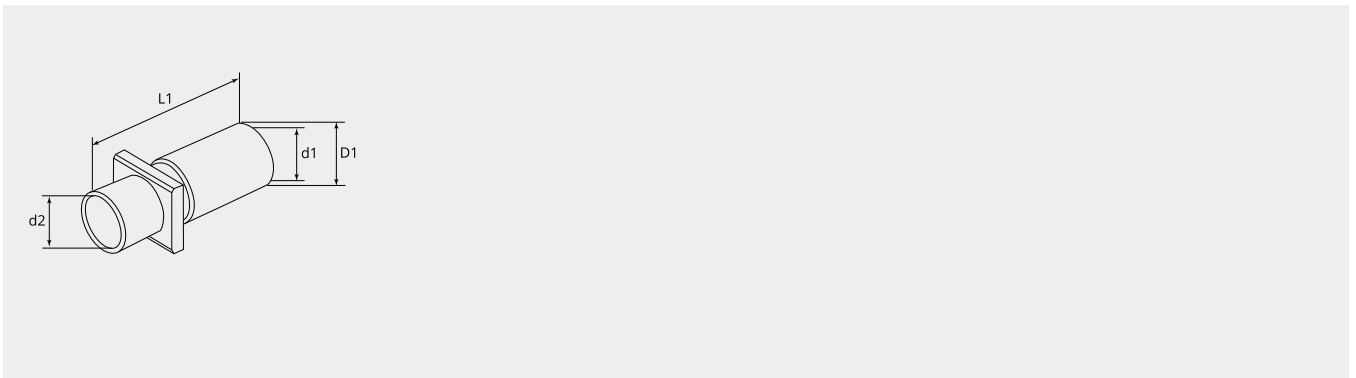


Cable clamp for Trac D-Sub and Trac DIN

Item number: SUKABC067S

Technical characteristics

Shell material:	Brass
Surface treatment:	Tin plated
EMI:	Yes
Operation temperature:	-55°C - +105°C

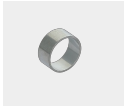


Dimensional drawing

D1 (Ø):	7.4
d1 (Ø):	6.7
d2 (Ø):	6.0
L1 (mm):	20.5

Complementary products:

Accessory:

**SUGSC297**

Shielding sleeve suitable for

Tools:

**GIM30K06**

Die to GIW30L

**GIW30L**

Mechanical hand press tool GIW30L