



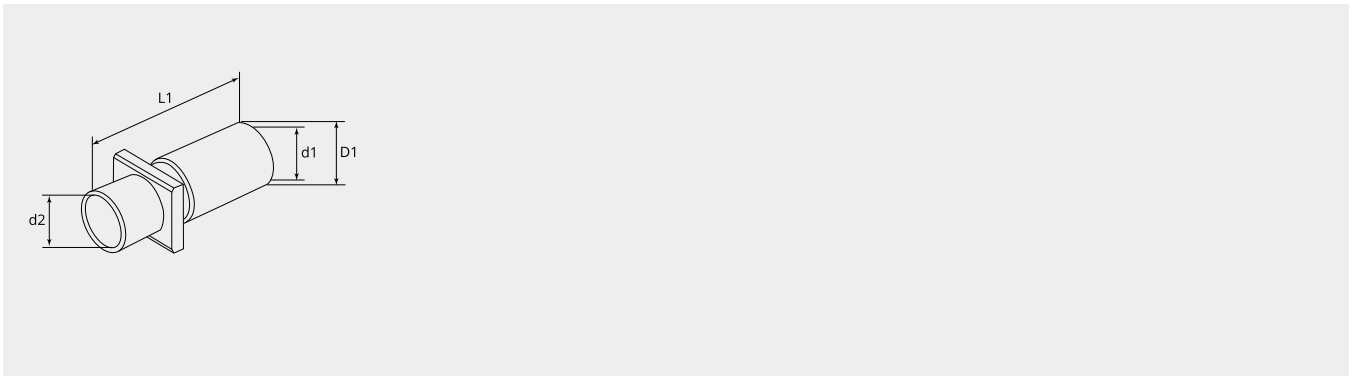
# Cable clamp for Trac D-Sub and Trac DIN

Item number: SUKABC09S

Net weight: 0.0041 kg

## Technical characteristics

Shell material:	Brass
Surface treatment:	Tin plated
EMI:	Yes
Operation temperature:	-55°C - +105°C

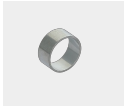


## Dimensional drawing

D1 (Ø):	10.0
d1 (Ø):	9.0
d2 (Ø):	9.0
L1 (mm):	20.5

## Complementary products:

### Accessory:

**SUGSC460**

Shielding sleeve suitable for

---

### Tools:

**GIM30K09**

Die to GIW30L

**GIW30L**

Mechanical hand press tool GIW30L