

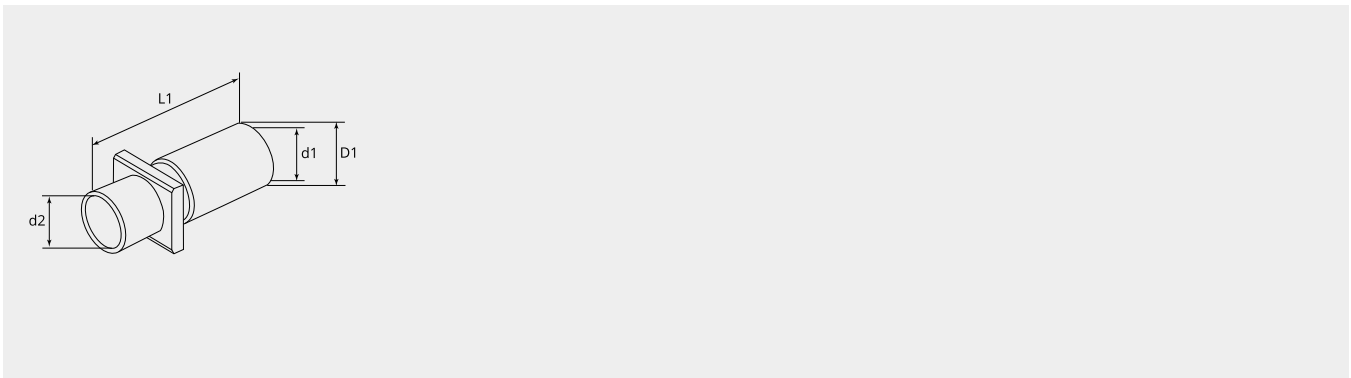


Cable clamp for Trac D-Sub and Trac DIN

Item number: SUKABC10S

Technical characteristics

| | |
|------------------------|----------------|
| Shell material: | Brass |
| Surface treatment: | Tin plated |
| EMI: | Yes |
| Operation temperature: | -55°C - +105°C |

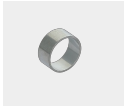


Dimensional drawing

| | |
|----------|------|
| D1 (Ø): | 11.0 |
| d1 (Ø): | 10.0 |
| d2 (Ø): | 9.0 |
| L1 (mm): | 30.5 |

Complementary products:

Accessory:

**SUGSC460**

Shielding sleeve suitable for

Tools:

**GIM30K10**

Die to GIW30L

**GIW30L**

Mechanical hand press tool GIW30L