



Contacts

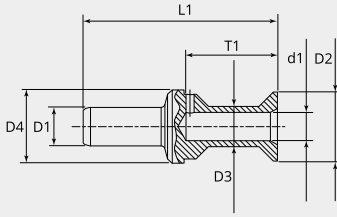
Pin contact HC series, 200A, 35mm²

Item number: GMRC-PHC-35AG

Packing unit: 1

Mechanical properties contacts

Contact type:	Pin
Strand/wire adaptation:	Crimp
Number of mating cycles (min.):	500
Contact Material:	CU alloy
Protective layer:	silver plated
Wire section (mm ²):	35
Stripping length (mm):	22.5
Max. Cable insulation Ø (mm):	18



Dimensional drawing

D1 (Ø):	9.5
D2 (Ø):	17.0
D3 (Ø):	12.5
D4 (Ø):	18.0
d1 (Ø):	8.2
L1 (mm):	47.7
T1 (mm):	22.5

Electrical properties contacts

Nominal current (A): 200