



# Contacts

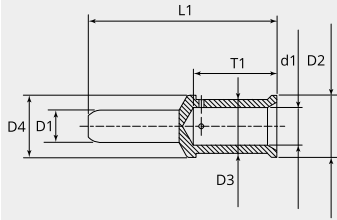
Pin contact K70C series, 70A, 16mm<sup>2</sup>

Item number: GMRC-PK70C-16AG

Packing unit: 5

## Mechanical properties contacts

Contact type:	Pin
Strand/wire adaptation:	Crimp
Number of mating cycles (min.):	500
Contact Material:	CU alloy
Protective layer:	silver plated
Wire section (mm <sup>2</sup> ):	16
Stripping length (mm):	15.5
Max. Cable insulation Ø (mm):	11



## Dimensional drawing

<b>D1 (Ø):</b>	6.0
<b>D2 (Ø):</b>	11.5
<b>D3 (Ø):</b>	8.5
<b>D4 (Ø):</b>	11.5
<b>d1 (Ø):</b>	5.5
<b>L1 (mm):</b>	35.0
<b>T1 (mm):</b>	15.5

## Electrical properties contacts

**Nominal current (A):** 70