



# Contacts

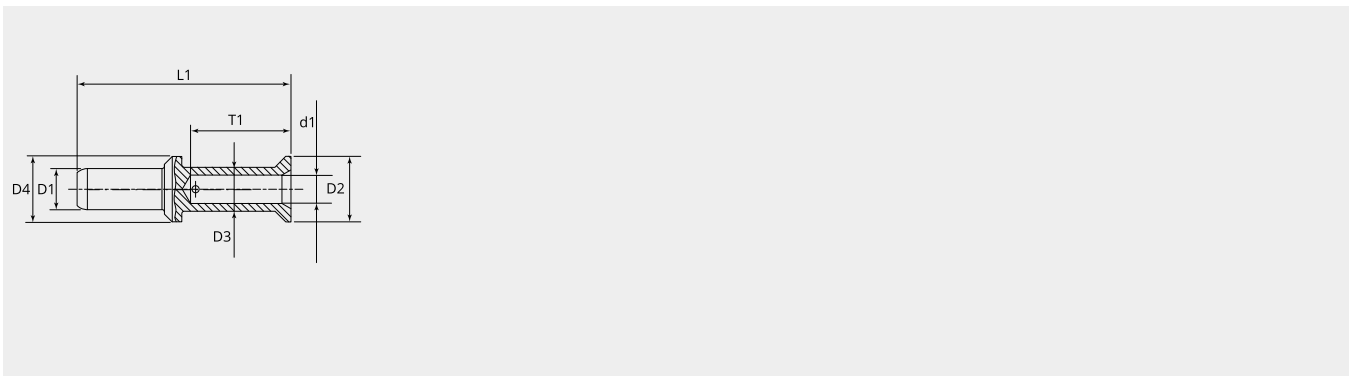
Pin contact KC series, 100A, 16mm<sup>2</sup>

Item number: GMRC-PKC-16AG

Packing unit: 5

## Mechanical properties contacts

Contact type:	Pin
Strand/wire adaptation:	Crimp
Number of mating cycles (min.):	500
Contact Material:	CU alloy
Protective layer:	silver plated
Wire section (mm <sup>2</sup> ):	16
Stripping length (mm):	19



## Dimensional drawing

D1 (Ø):	8.0
D2 (Ø):	12.7
D3 (Ø):	8.5
D4 (Ø):	12.7
d1 (Ø):	5.5
L1 (mm):	41.5
T1 (mm):	19.5

## Electrical properties contacts

Nominal current (A):	100
----------------------	-----

