



Contacts

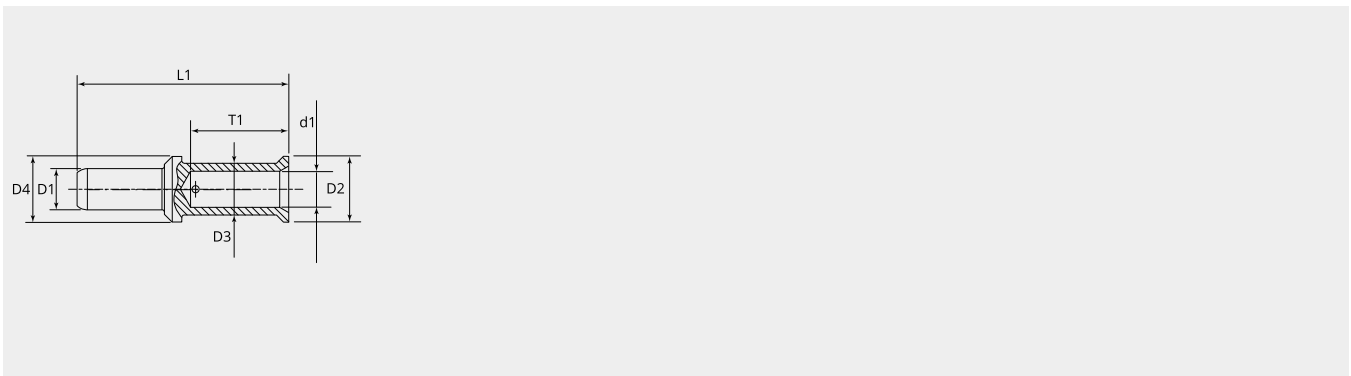
Pin contact KC series, 100A, 25mm²

Item number: GMRC-PKC-25AG

Packing unit: 5

Mechanical properties contacts

| | |
|----------------------------------|---------------|
| Contact type: | Pin |
| Strand/wire adaptation: | Crimp |
| Number of mating cycles (min.): | 500 |
| Contact Material: | CU alloy |
| Protective layer: | silver plated |
| Wire section (mm ²): | 25 |
| Stripping length (mm): | 19 |



Dimensional drawing

| | |
|----------|------|
| D1 (Ø): | 8.0 |
| D2 (Ø): | 12.7 |
| D3 (Ø): | 10.0 |
| D4 (Ø): | 12.7 |
| d1 (Ø): | 7.0 |
| L1 (mm): | 41.0 |
| T1 (mm): | 19.0 |

Electrical properties contacts

| | |
|----------------------|-----|
| Nominal current (A): | 100 |
|----------------------|-----|

