

Contacts

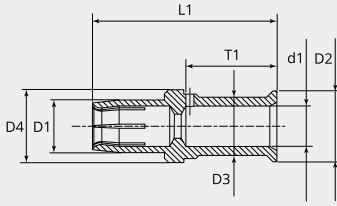
Socket contact HC series, 200A, 25mm²

Item number: GMRC-SHC-25AG

Packing unit: 1

Mechanical properties contacts

Contact type:	Socket
Strand/wire adaptation:	Crimp
Number of mating cycles (min.):	500
Contact Material:	CU alloy
Protective layer:	silver plated
Wire section (mm²):	25
Stripping length (mm):	22.5
Max. Cable insulation Ø (mm):	18



Dimensional drawing

D1 (Ø):	13.0
D2 (Ø):	17.5
D3 (Ø):	10.0
D4 (Ø):	18.0
d1 (Ø):	7.0
L1 (mm):	45.6
T1 (mm):	22.5

Electrical properties contacts

Nominal current (A):	200
-----------------------------	-----

