

# Contacts

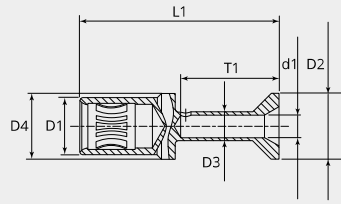
Socket contact KC series, 100A, 10mm<sup>2</sup>

Item number: GMRC-SKC-10AG

Packing unit: 5

## Mechanical properties contacts

<b>Contact type:</b>	Socket
<b>Strand/wire adaptation:</b>	Crimp
<b>Number of mating cycles (min.):</b>	500
<b>Contact Material:</b>	CU alloy
<b>Protective layer:</b>	silver plated
<b>Wire section (mm<sup>2</sup>):</b>	10
<b>Stripping length (mm):</b>	19



## Dimensional drawing

<b>D1 (Ø):</b>	11.0
<b>D2 (Ø):</b>	12.7
<b>D3 (Ø):</b>	5.6
<b>D4 (Ø):</b>	12.7
<b>d1 (Ø):</b>	4.3
<b>L1 (mm):</b>	38.5
<b>L2 (mm):</b>	14.2
<b>T1 (mm):</b>	19.0

## Electrical properties contacts

<b>Nominal current (A):</b>	100
-----------------------------	-----

