



Contacts

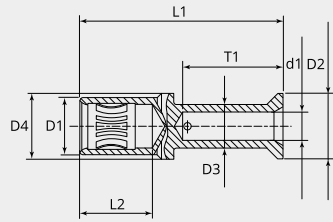
Socket contact KC series, 100A, 16mm²

Item number: GMRC-SKC-16AG

Packing unit: 5

Mechanical properties contacts

Contact type:	Socket
Strand/wire adaptation:	Crimp
Number of mating cycles (min.):	500
Contact Material:	CU alloy
Protective layer:	silver plated
Wire section (mm ²):	16
Stripping length (mm):	19



Dimensional drawing

D1 (Ø):	11.0
D2 (Ø):	12.7
D3 (Ø):	8.5
D4 (Ø):	12.7
d1 (Ø):	5.5
L1 (mm):	39.5
L2 (mm):	14.0
T1 (mm):	19.5

Electrical properties contacts

Nominal current (A):	100
-----------------------------	-----

